

WatchPower

User's Manual

Management Software for Inverter

Table of Contents

1.	WatchPower Overview	2
1.1.	Introduction	2
1.2.	Features	2
2.	WatchPower Install and Uninstall	2
2.1.	System Requirement	2
2.2.	Software Install	3
2.3.	Software Uninstall	8
3.	Tray Application	8
3.1.	Startup	8
3.2.	Configuration	10
3.2.1.	Software Upgrades	10
3.2.2.	Configuration Saved	11
3.3.	Software Upgrade	11
3.4.	Icon and Software Status	12
3.5.	Message Board	12
3.6.	Exit	13
4.	GUI Interface	13
4.1.	WatchPower Configuration	17
4.1.1.	Basic	17
4.1.2.	Password	18
4.1.3.	SMS Setting	19
4.1.4.	E-mail	21
4.1.5.	Event action	22
4.1.6.	Com. port Plug And Play Setting	23
4.2.	Device control	24
4.2.1.	Parameter Setting	24
4.2.2.	Restore to the defaults	26
4.3.	View	27
4.3.1.	Data	27
4.3.2.	Event log	29
4.4.	Log in and Log out	29
4.5.	Help	31

1. WatchPower Overview

1.1. Introduction

WatchPower is an inverter monitoring software which can monitor multiple devices via serial port at the same time. The major functions of WatchPower monitoring software include data log for devices, alarm messages, fault messages, and parameter setting for devices.

1.2. Features

- Automatic and real-time data acquisition of devices and secured data log saving
- Graphic display of device data for quick and easy reading
- Warning notifications or fault alarms via mobile messenger, tray message and e-mail
- Easy diagnosis from event statistics
- Supports online upgrade and manually upgrade

2. WatchPower Install and Uninstall

2.1. System Requirement

- 512 MB physical memory at least (1 GB is recommended)
- 2GB hard disk space at least
- Administrator authority is required
- More than 32-bit colors and 1280 x 800 or above resolution display is recommended
- An available communication port is needed
- Platforms supported by software are listed below:
 - Windows XP/2000/2003/Vista/2008 (32-bit & x64-bit)
 - Windows 7 (32-bit & x64-bit)
 - Windows SBS 2011
 - Linux RedHat 8, 9
 - Linux RedHat Enterprise AS3, AS5, AS6 (32-bit)
 - Linux RedHat Enterprise AS6 (64-bit)

- Linux RedHat Enterprise 5.2 (32-bit & 64-bit)
- Linux SUSE 10 (32-bit & 64-bit)
- Linux Cent OS 5.4 (32-bit)
- Linux Ubuntu 8.X, 9.X, 10.X (32-bit)
- Linux Ubuntu 10.X (64-bit)
- Linux Ubuntu 12.04 (32-bit & 64-bit)
- Linux Fedora 5
- Linux OpenSUSE 11.2 (32-bit & 64-bit)
- Linux Debian 5.x, 6.x (32-bit)
- Linux Debian 6.x (64-bit)

2.2. Software Install

Step 1 After clicking install, it will display the installation in process. Refer to the diagram 2-1.

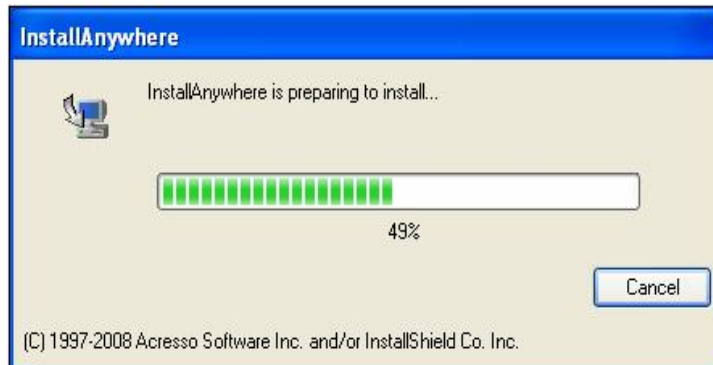


Diagram 2-1

Step 2 Choose wanted language and click "OK" as diagram 2-2.

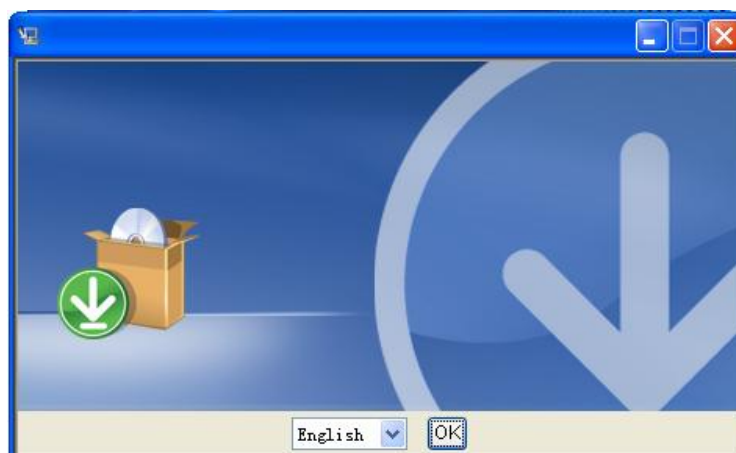


Diagram 2-2

Step 3 Click "Next" to proceed to the next screen as Diagram 2-3.

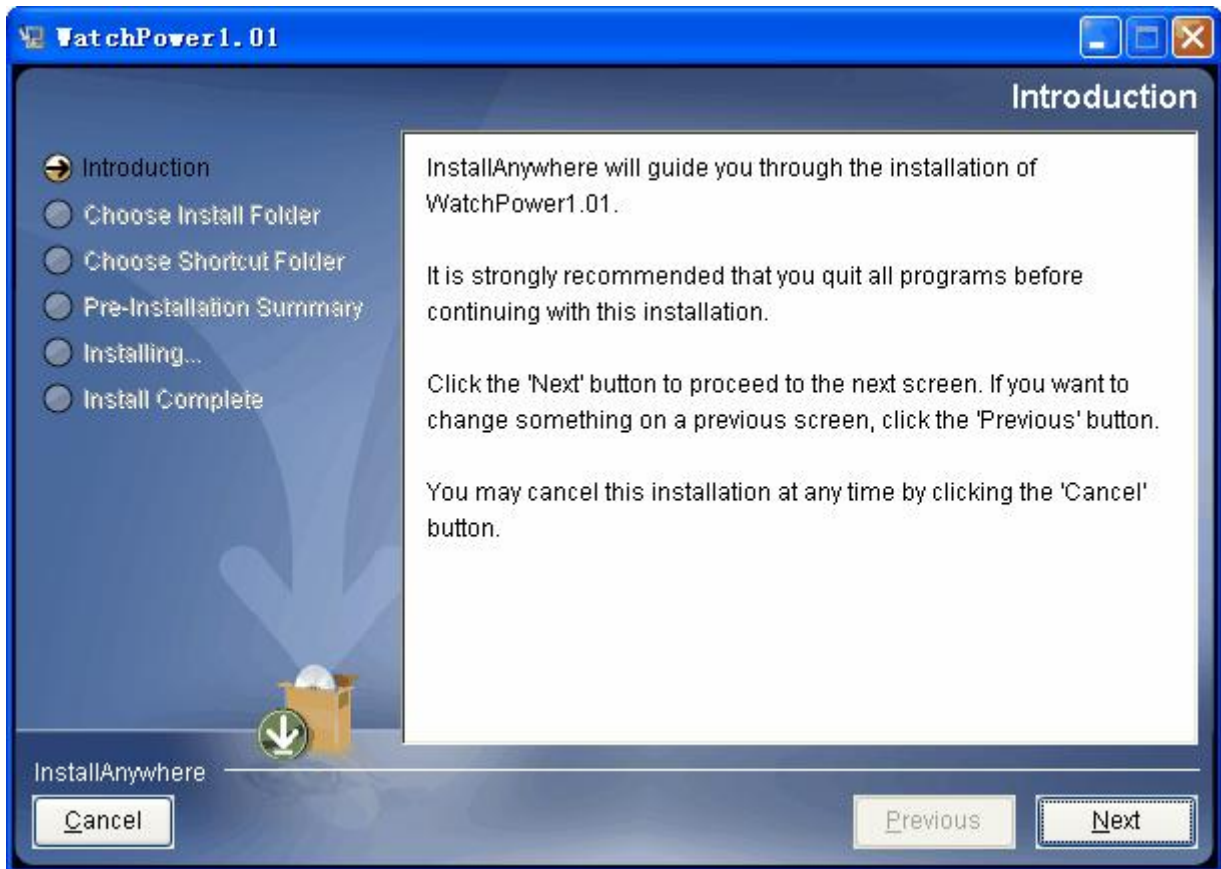


Diagram 2-3

Step 4 Click "Choose" button to change the default folder. After choosing the installed folder, click "Next" button. Refer to the following diagram 2-4.

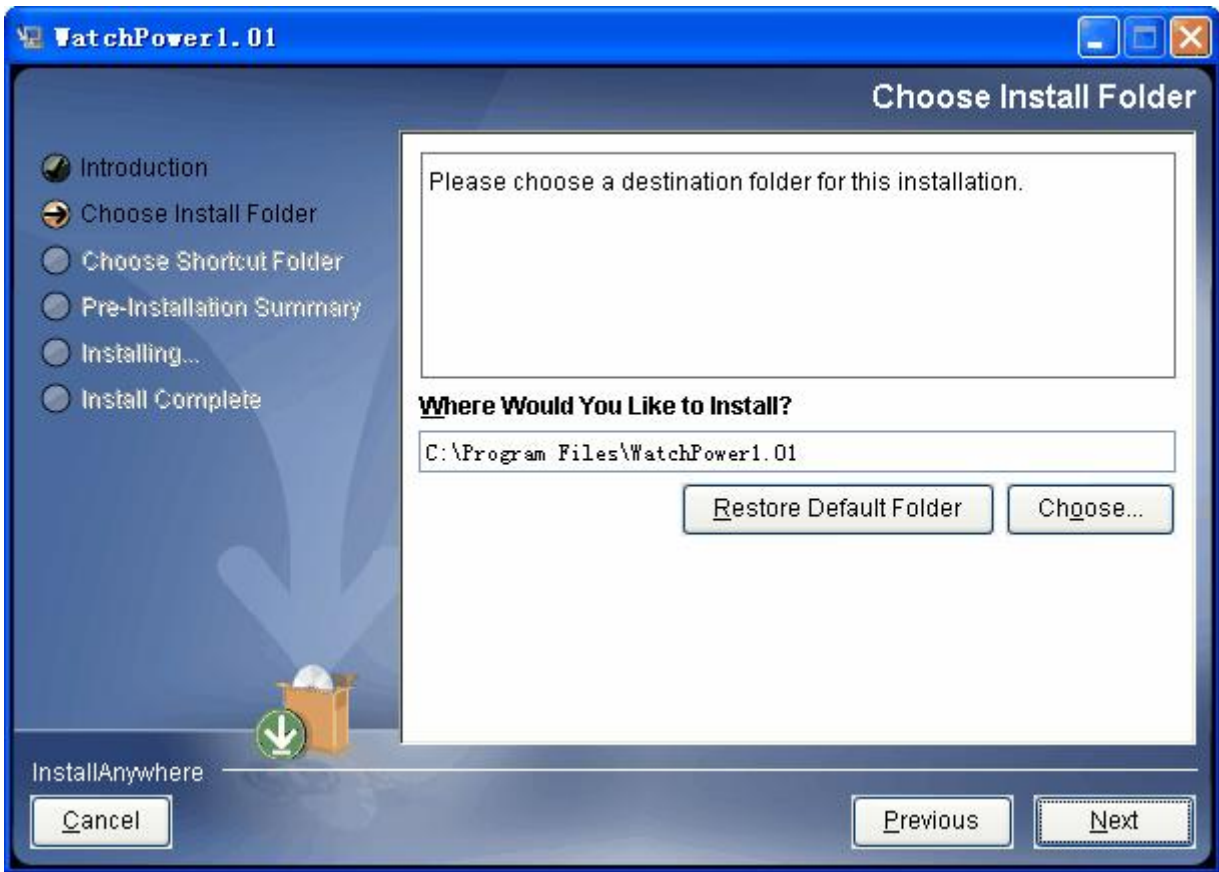


Diagram 2-4

Step 5 Choose the shortcut folder and click "Next" button. Refer to the following diagram 2-5.

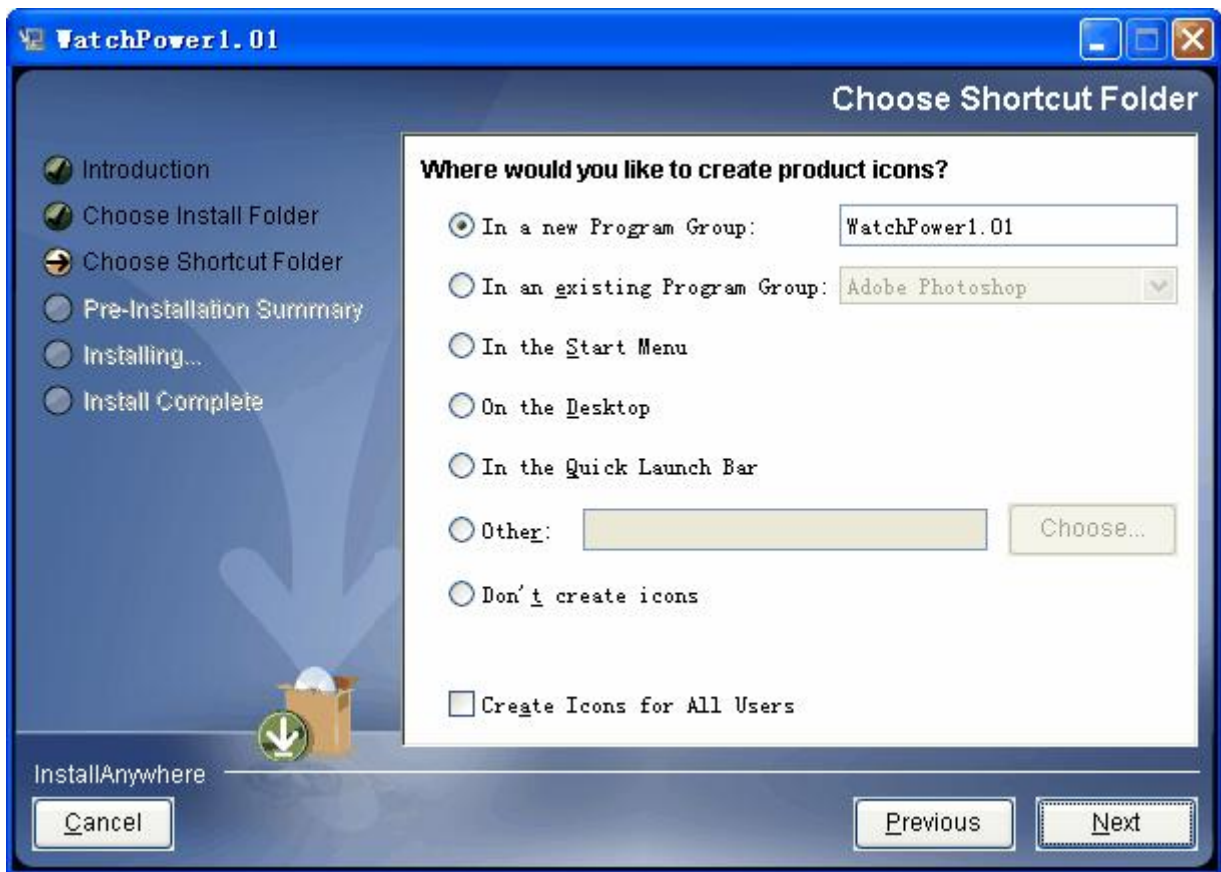


Diagram 2-5

Step 6 It will display the software summary before installation. Click "Install" button to start the installation and refer to Diagram 2-6.

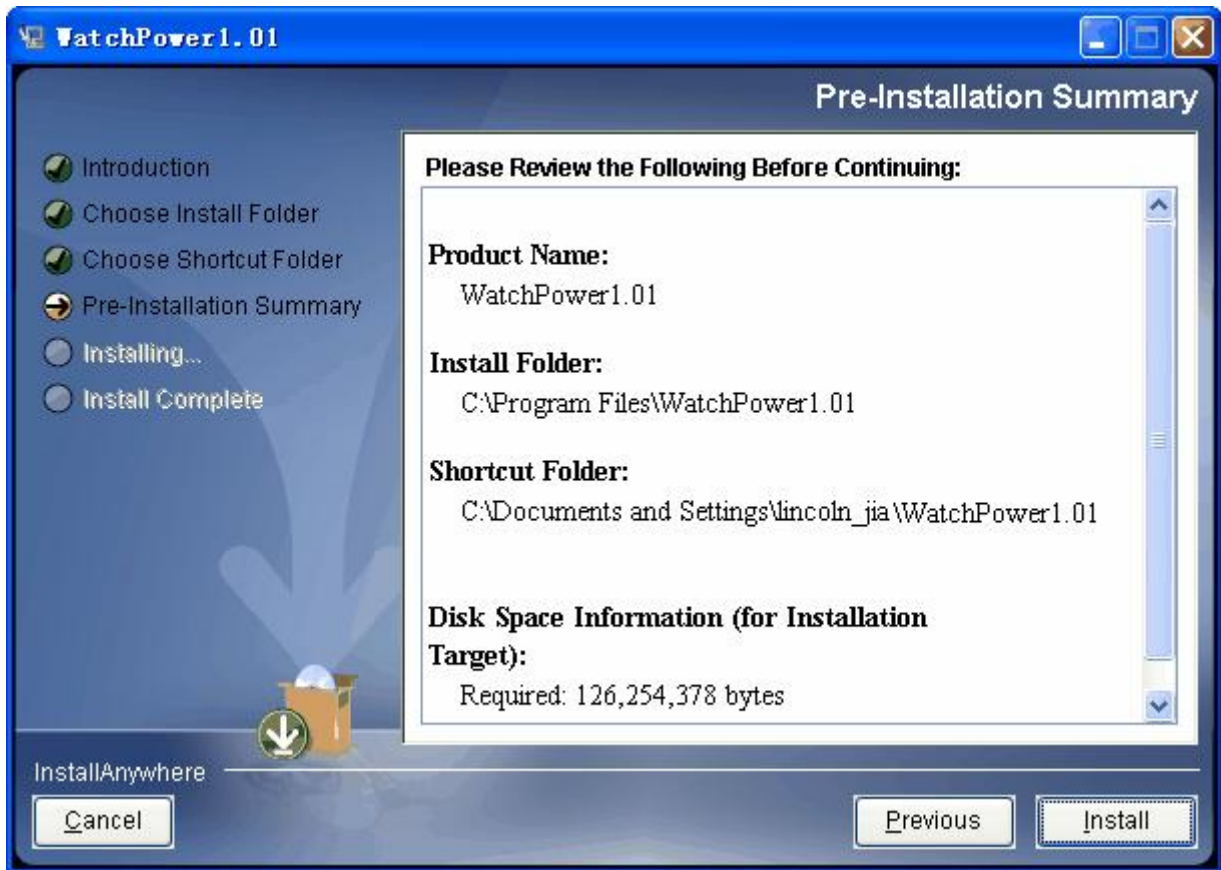


Diagram 2-6

Step 7 Installation is processing. Refer to Diagram 2-7.



Diagram 2-7

Step 8 Click "Done" button to confirm the installation completely. Refer to Diagram 2-8.

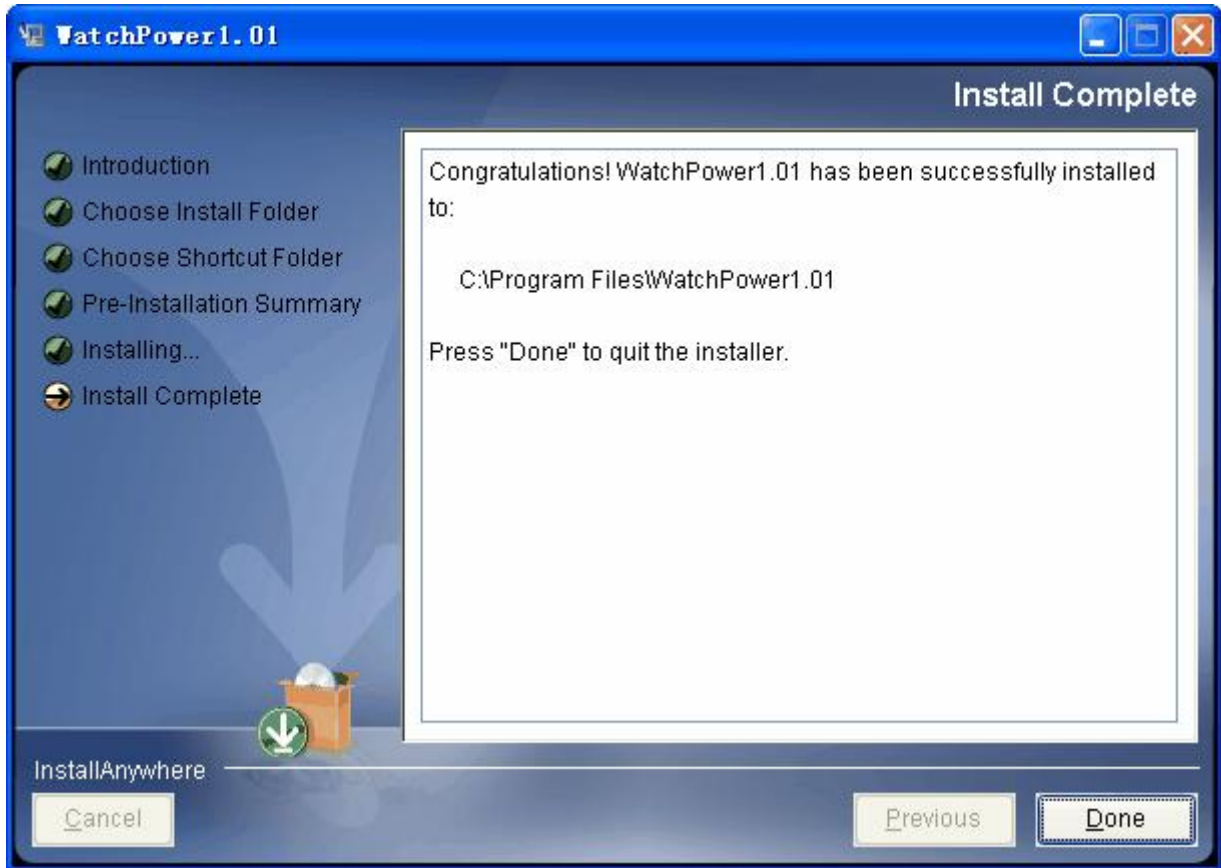


Diagram 2-8

Note: Please uninstall the previous version before installing the new version software.

2.3. Software Uninstall

Please choose Start >> All Programs >> WatchPower >> Uninstall. Then, follow the on-screen instruction to uninstall the software.

Note: Before uninstalling software, you must stop all software programs first and log in as "Administrator"! Otherwise, it can't be uninstalled completely.

3. Tray Application

3.1. Startup

The Installer will leave a shortcut icon called "WatchPower" on your desktop. Refer to Diagram 3-1. Simply double click the shortcut icon. Then, it will start the software and

display a service icon located in tray. It will pop up function menu by clicking right button of the mouse. Refer to below diagram 3-2.



Diagram 3-1

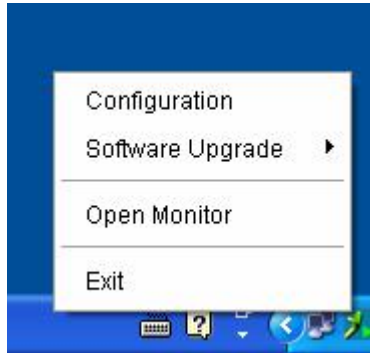


Diagram 3-2

3.2. Configuration

3.2.1. Software Upgrades

Refer to Diagram 3-3 for the detailed configuration for online upgrade:

- Specify the URL for update files: This is the directory to online update software. Please do not change it unless it's instructed by software manufacturer.
- Save files to: The directory to save files in your hard drive.
- Online auto-update: If selected, it will automatically check if there is any new version launched online every 1 hour.
- If applying online upgrade, please follow below for configuration:
 1. Select "Apply the proxy configuration".
 2. Enter IP address and port of server.
 3. If ID identification is requested, select "Enable authentication" and enter User Name and Password.
- Connection test: Click this button to test if all configurations are set up well.

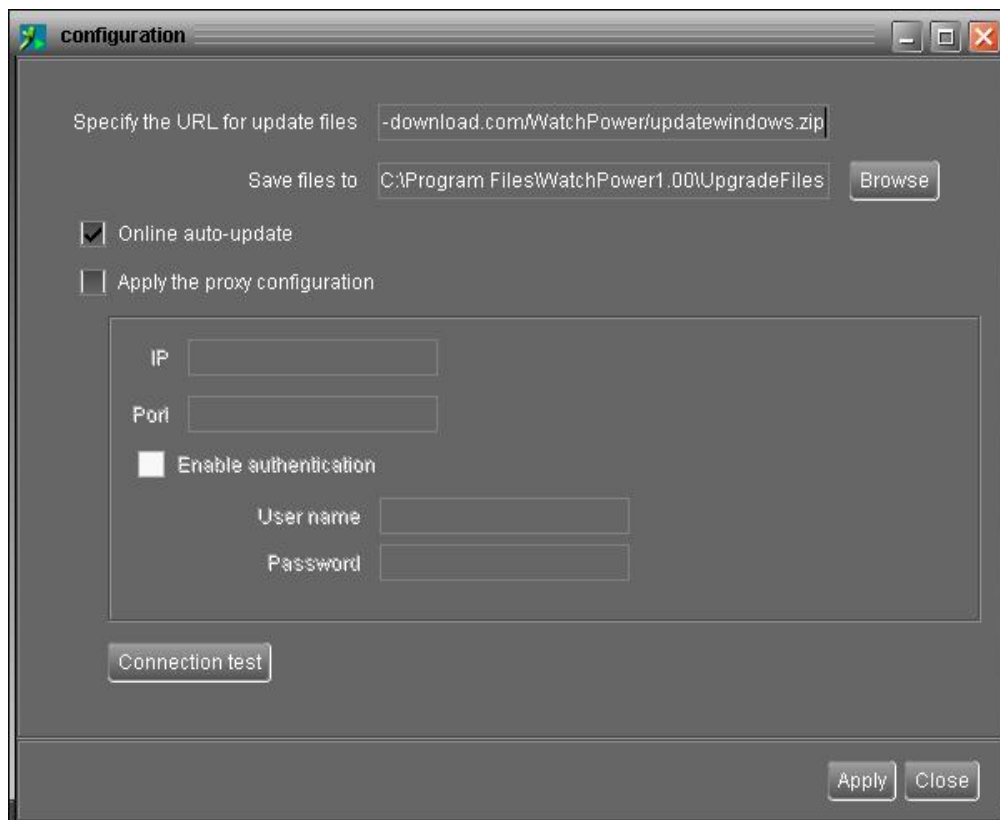


Diagram 3-3

3.2.2. Configuration Saved

Click "Apply" button to save all changes in Configuration page. Click "Cancel" to stop the change.

3.3. Software Upgrade

Software upgrades includes online upgrade and manually upgrade.

- Online Upgrade:

Click "Online Upgrade" to search the latest software version. If there is new version, it will automatically download and upgrade. Refer to Diagram 3-4.

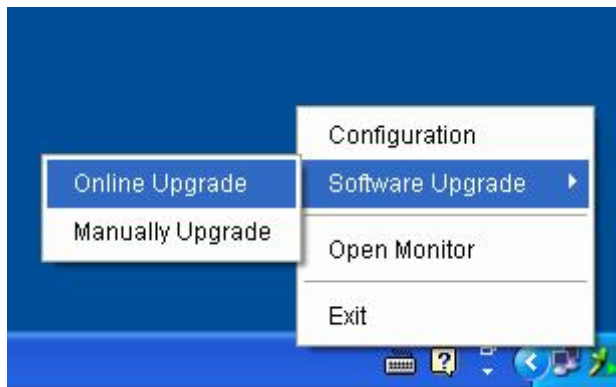


Diagram 3-4

- Manually Upgrade:

Users can manually upgrade the software. Follow below steps:

1. Click "Manually Upgrade" from function menu. Refer to Diagram 3-5.

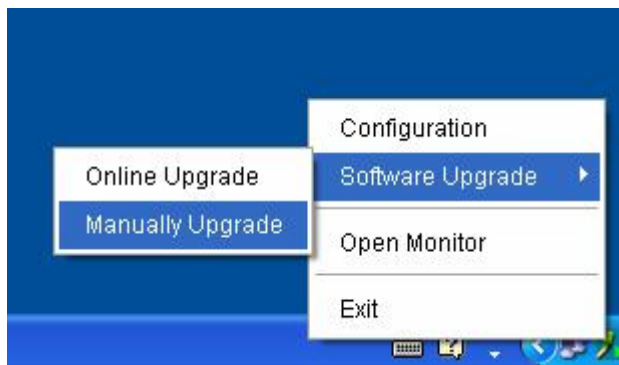


Diagram 3-5

2. Click "Browse" to choose file directory. Then, click "Upgrade" to upgrade software. Refer to Diagram 3-6.

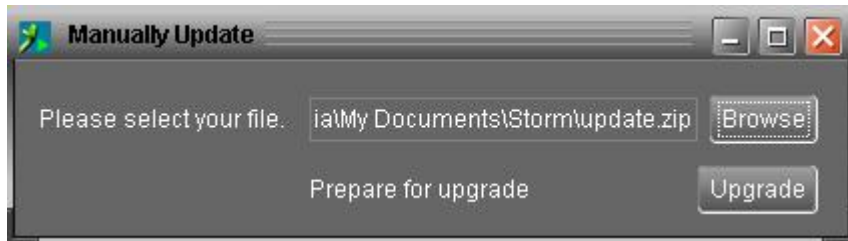






Diagram 3-6

3.4. Icon and Software Status

- Connecting devices:  and  will rotate as an animation
- When receiving event message with devices connected:  will flash for reminder
- When receiving event message without devices connected:  will flash for reminder

3.5. Message Board

Users can check message board for event list. Refer to Diagram 3-7:

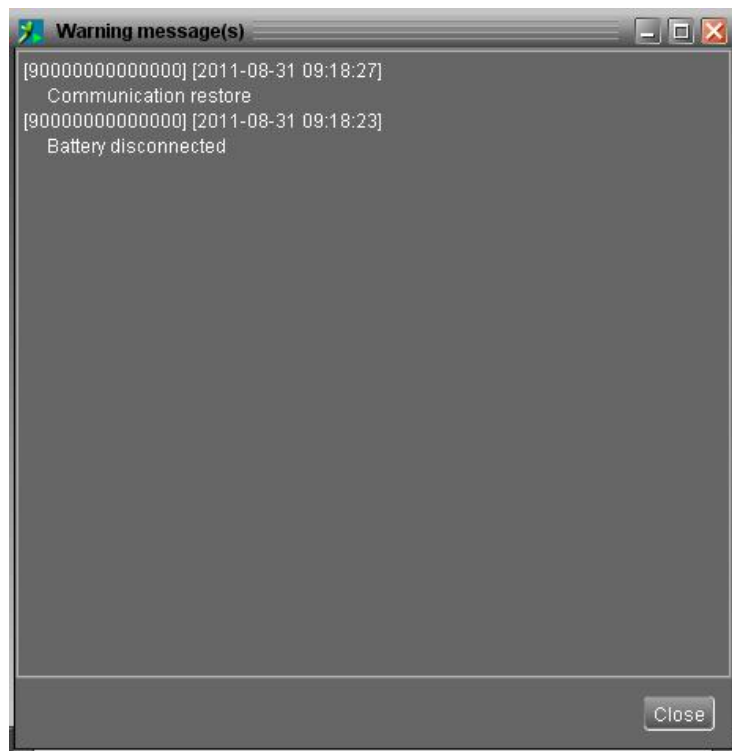


Diagram 3-7

3.6. Exit

Click "Exit" to exist service application.

4. GUI Interface

There are five sections in GUI interface as marked in the illustration below:

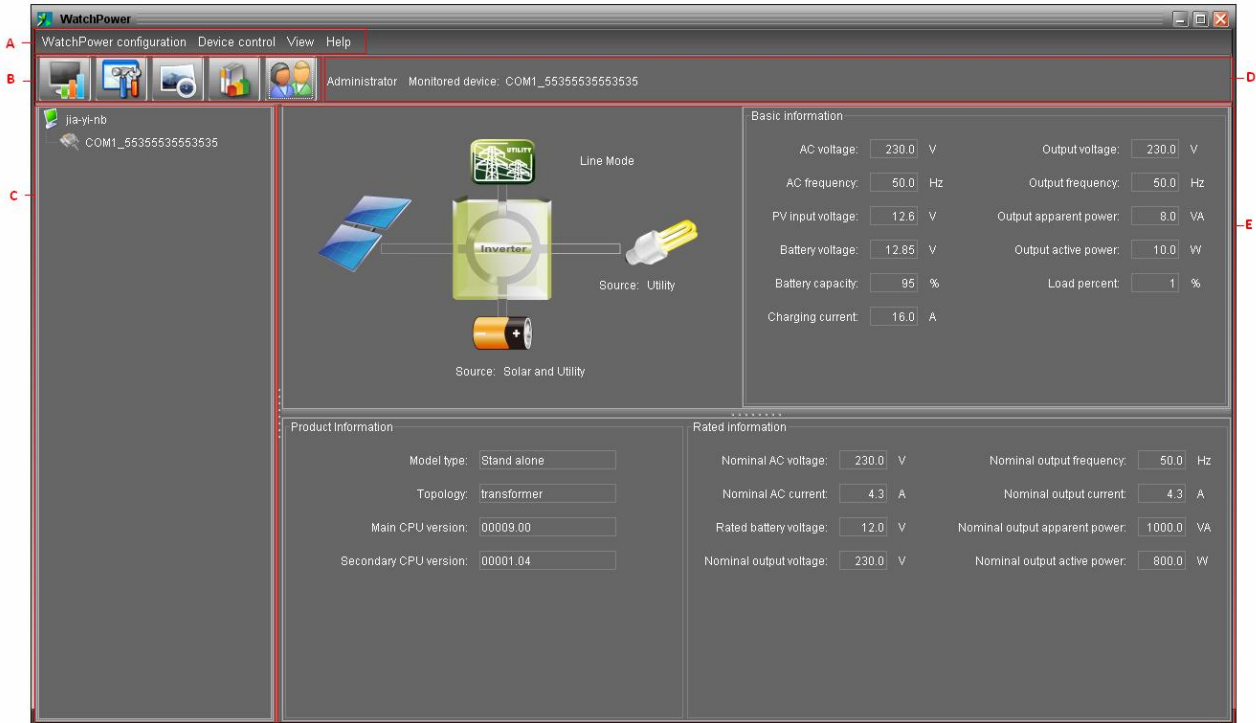


Diagram 4-1

A. Function Menu offers complete tool-set for navigating and setting the GUI.

B. Shortcut Menu provides short cuts to more commonly used functions.

C. Inverter Navigation indicates all devices.

D. Current Monitoring Information displays User ID, monitored inverter ID.

E. Main Window displays power flow, operation information, device information and rated information of current monitored inverter. Refer to Diagram 4-2.

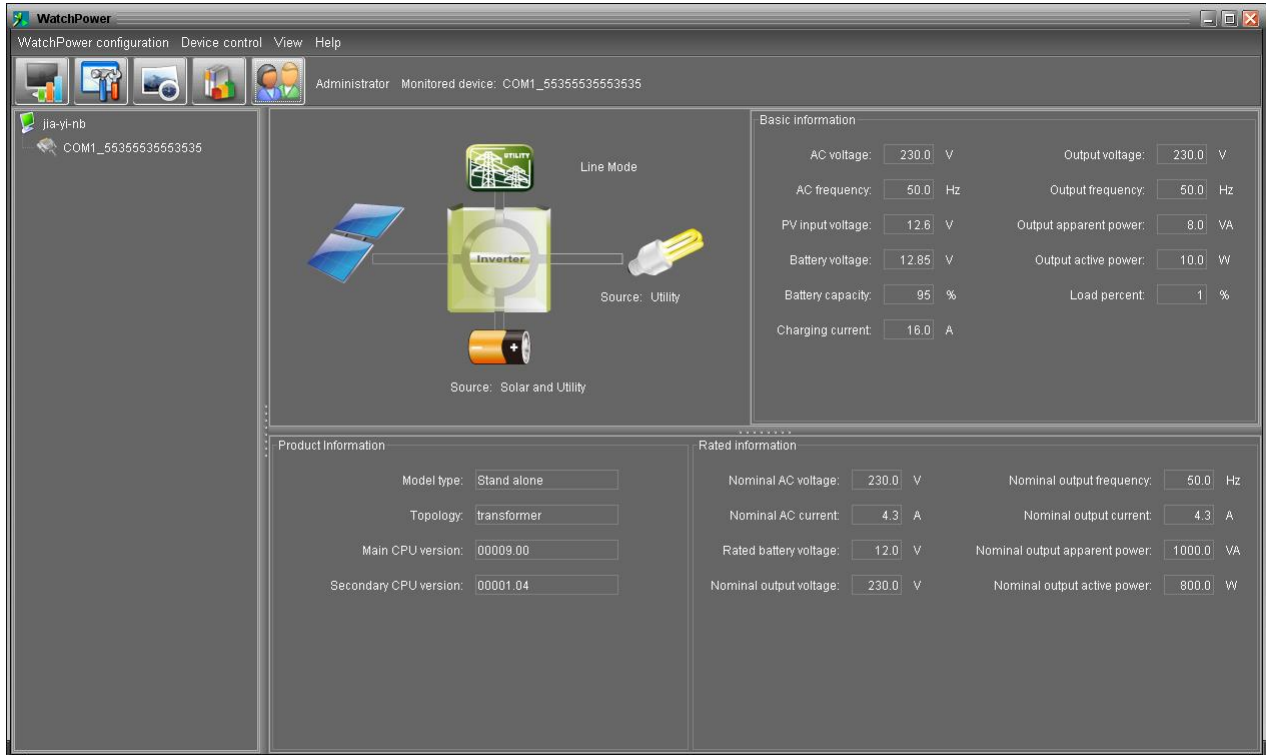


Diagram 4-2

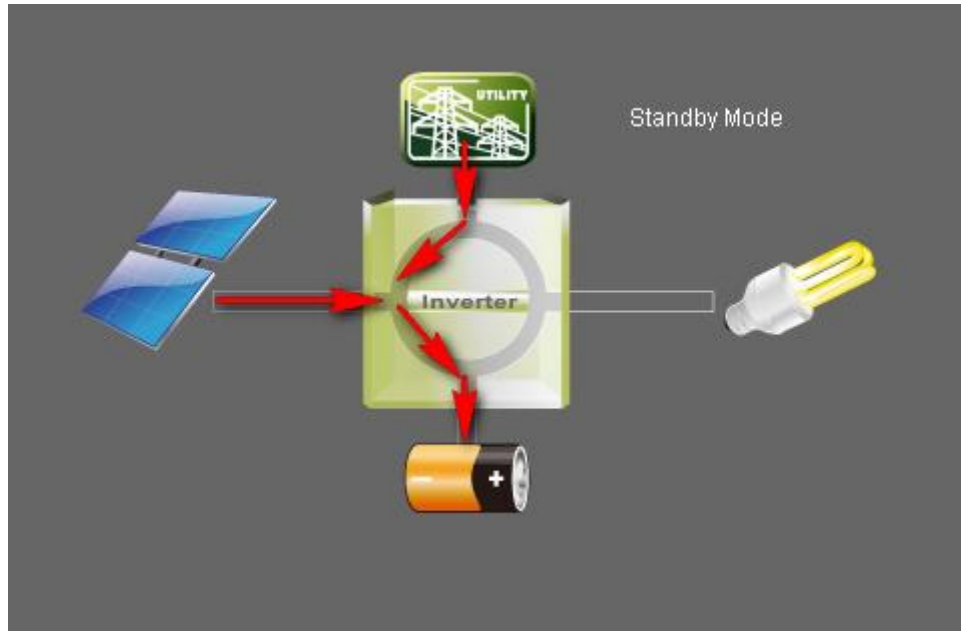
1. Power flow:

There are five device icons: solar panel, battery, inverter, load and the utility. It displays dynamic power flow with these five device icons.

- Power on and Standby mode: Inverter won't power the load until "ON" switch is pressed. Qualified utility or PV source can charge battery in standby mode.

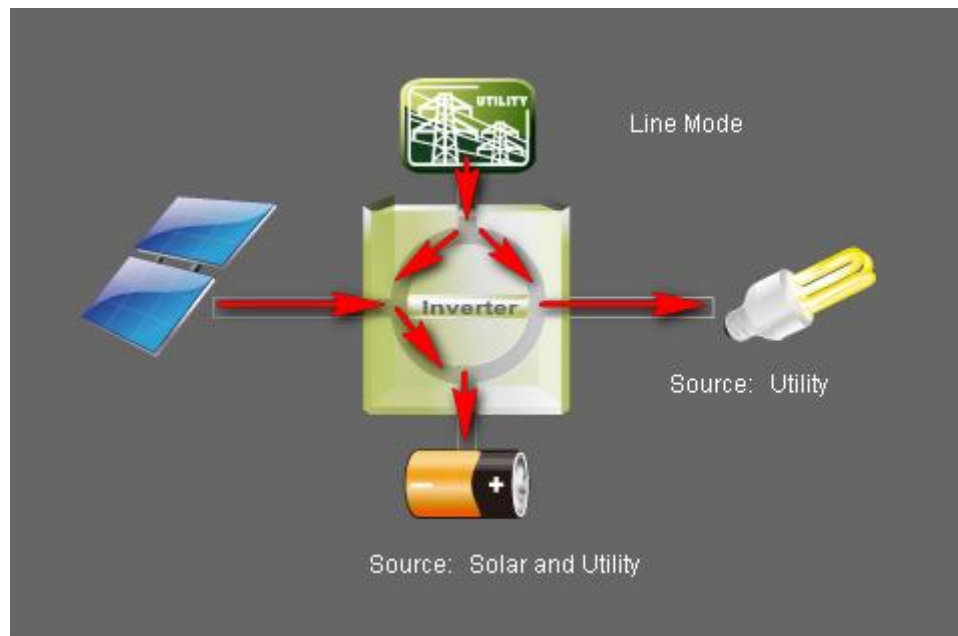


Power on Mode



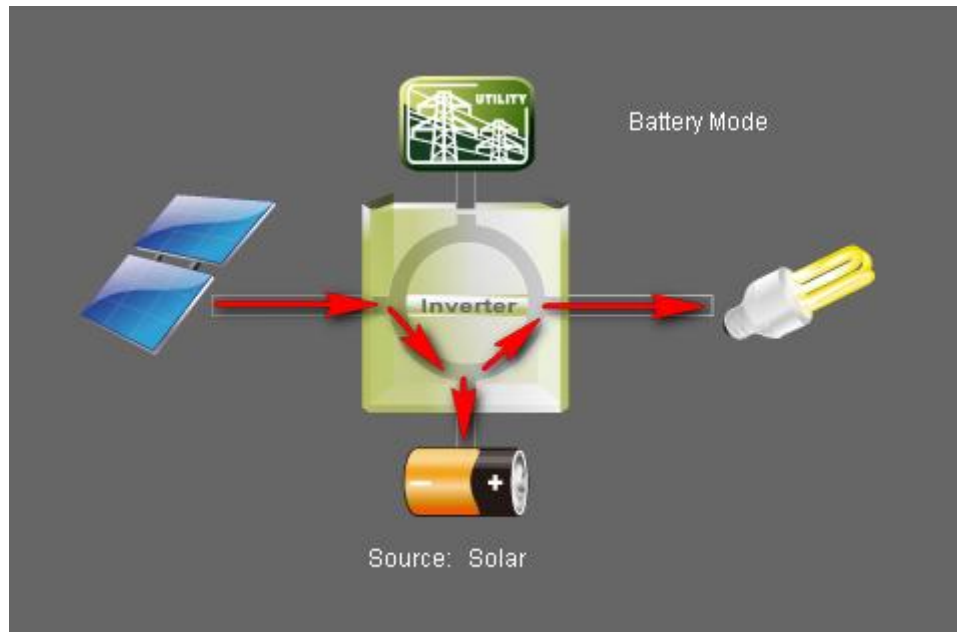
Standby Mode

- Line mode: Inverter will power the load from utility. Qualified utility or PV source can charge battery.



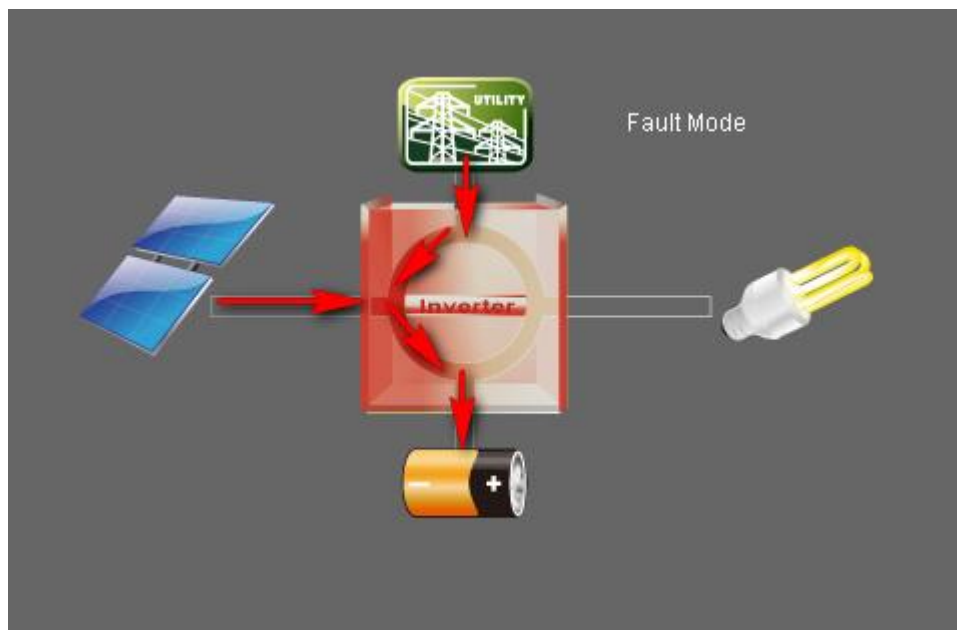
Line Mode

- Battery mode: Inverter will power the load from battery or PV panel. Only PV source can charge battery.



Battery Mode

- Fault mode: Some faults occurred in inverter and no power output from inverter. Qualified utility or PV source still can charge battery.



Fault Mode

2. Basic Information:

It displays information of AC voltage, AC frequency, PV input voltage, Battery voltage, Battery capacity, Charging current, Output voltage, Output frequency, Output apparent power, Output active power, and Load percent.

3. Product information:

Product information displays Mode type, Topology, Main CPU version and Secondary CPU version.

4. Rated information:

Rated information displays information of Nominal AC voltage, Nominal AC current, Rated battery voltage, Nominal output voltage, Nominal output frequency, Nominal output current, Nominal output apparent power and Nominal output active power.

4.1. WatchPower Configuration

4.1.1. Basic

It is to set up parameters for display. Select WatchPower Configuration>>Basic. Refer to Diagram 4-3.

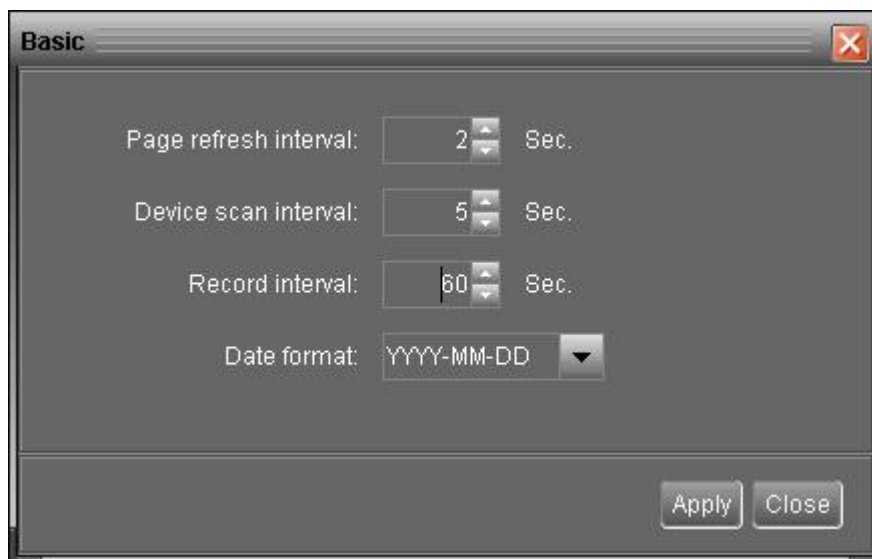


Diagram 4-3

1. Page refresh interval: This interval time will determine how long the web page is refreshed. Setting range is from 5 to 600 seconds. The default setting is 5 seconds.
2. Devices scan interval: This interval time will determine how long to scan connected devices. The setting range is from 5 to 600 seconds. The default setting is 5 seconds.
3. Record interval: This interval time will determine how long to record monitoring

data of inverters into database. The setting range is from 30 to 600 seconds. The difference between each option is 30 seconds. The default setting is 60 seconds.

4. Date format: This system supports 4 different formats, "YYYY-MM-DD", "YYYY/MM/DD", "MM-DD-YYYY" and "MM/DD/YYYY". The default setting is "YYYY-MM-DD".

If any change is made, simply click "Apply" button. Then, the setting will be saved.

4.1.2. Password

It's password configuration for administrator only. Before operating and configuring the software, please login first and modify the password. The default password is "administrator" at first log in. Users can only browse inverter status and information as Guest without login as an Administrator. A guest can not control or execute any setting.

Step 1 Select WatchPower Configuration>>Password. Refer to Diagram 4-4.



Diagram 4-4

Step 2 Enter old password, new password, and re-type new password in confirm password column to modify password for administrator. The password should be at least 6 digits. Then, click "Apply" button to successfully modify password for administrator.

NOTE1: Simply click "Login" button on the top right corner to log in the software.

NOTE2: If password is forgotten, it's necessary to re-install the software.

4.1.3. SMS Setting

It's to enter SMS receiver list. In the event of an alarm condition occurring, a message about inverter status will be sent to the specified users via mobile phone. For the event receiving list, please configure in "Event Action" column (refer to section 4.1.5).

Step 1 Choose WatchPower Configuration >> SMS Setting. Refer to Diagram 4-5.

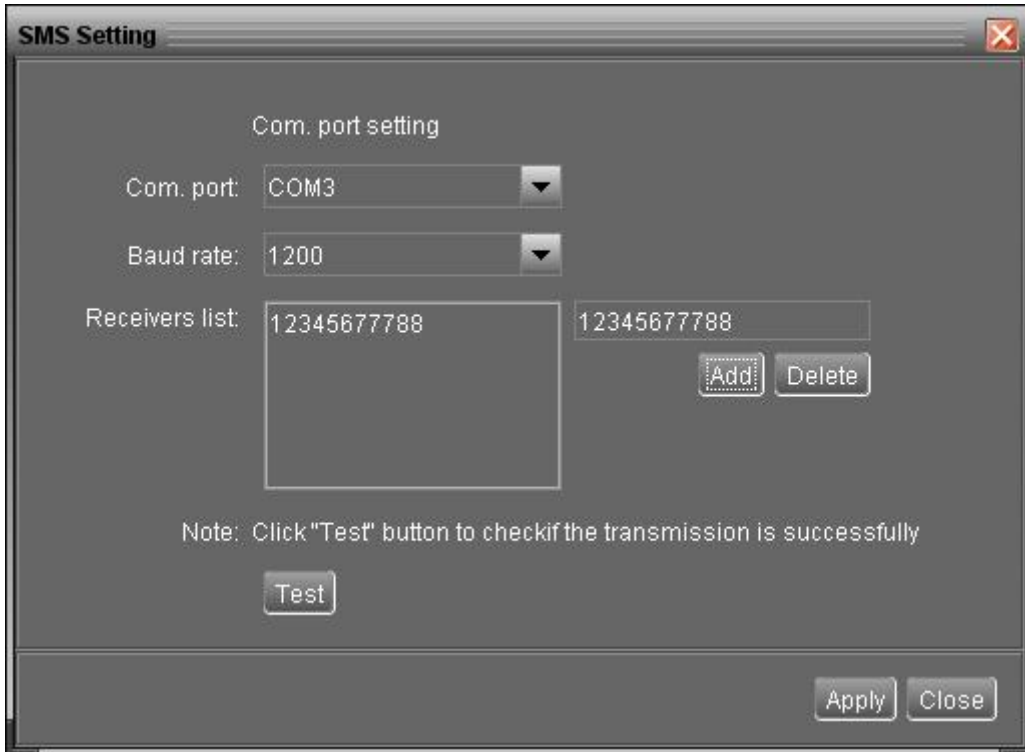


Diagram 4-5

Step 2 Select communication port and baud rate.

Step 3 Enter mobile phone numbers in "Phone no." column and click "Add" button to add phone no. in Receivers List. To delete numbers, simply select phone no. from "Receivers list" and click "Delete".

Step 4 Click "Apply" button to save all changes. The "Test" button can be used to send a test SMS to make sure the setting is correct. If all parameters are set up correctly, system will send a test message to all receivers and pop up a successful message. (Refer to Diagram 4-6) Otherwise, it will pop up a failure dialog to indicate there is an error for parameter setting. (Refer to Diagram 4-7)

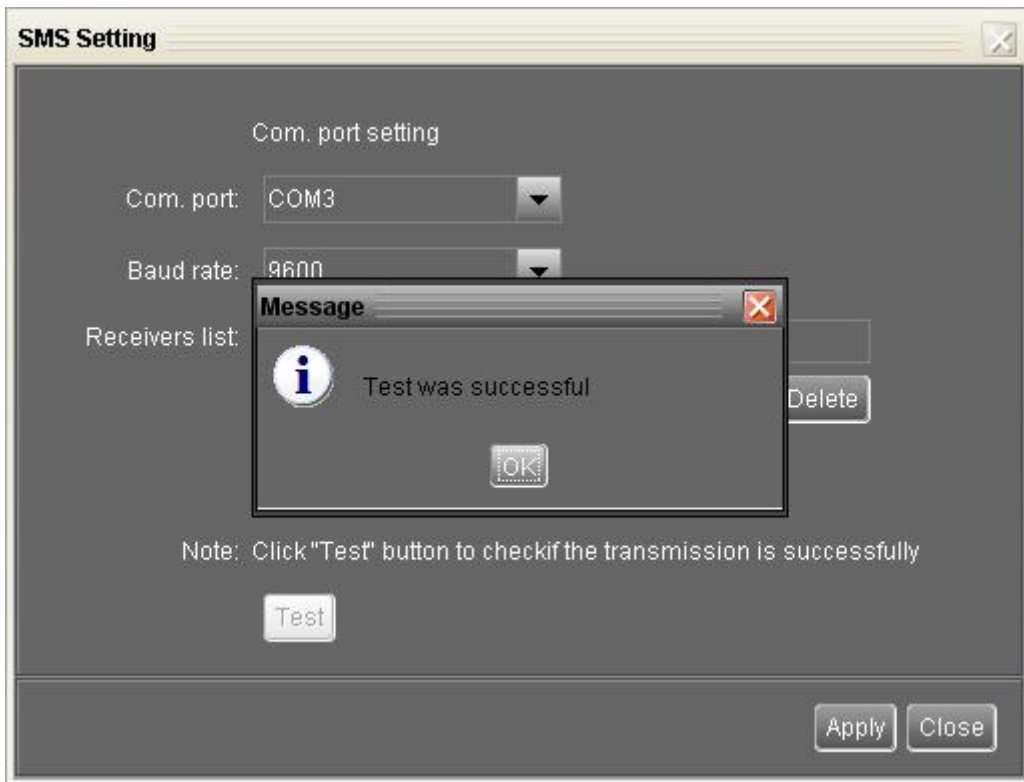


Diagram 4-6

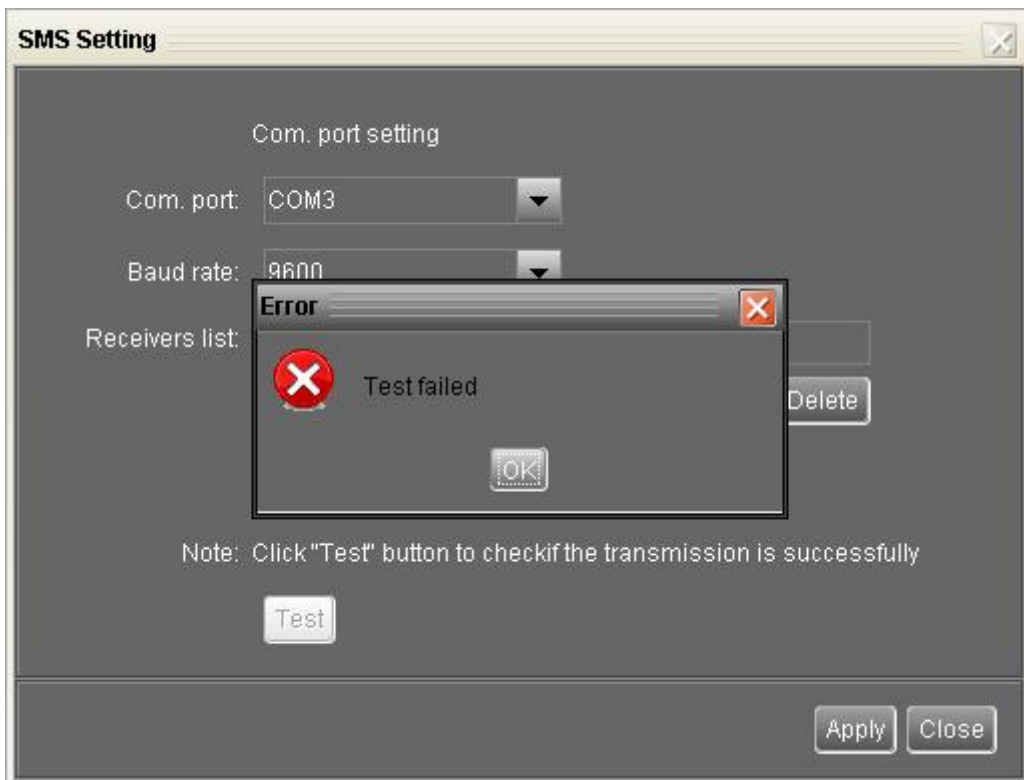


Diagram 4-7

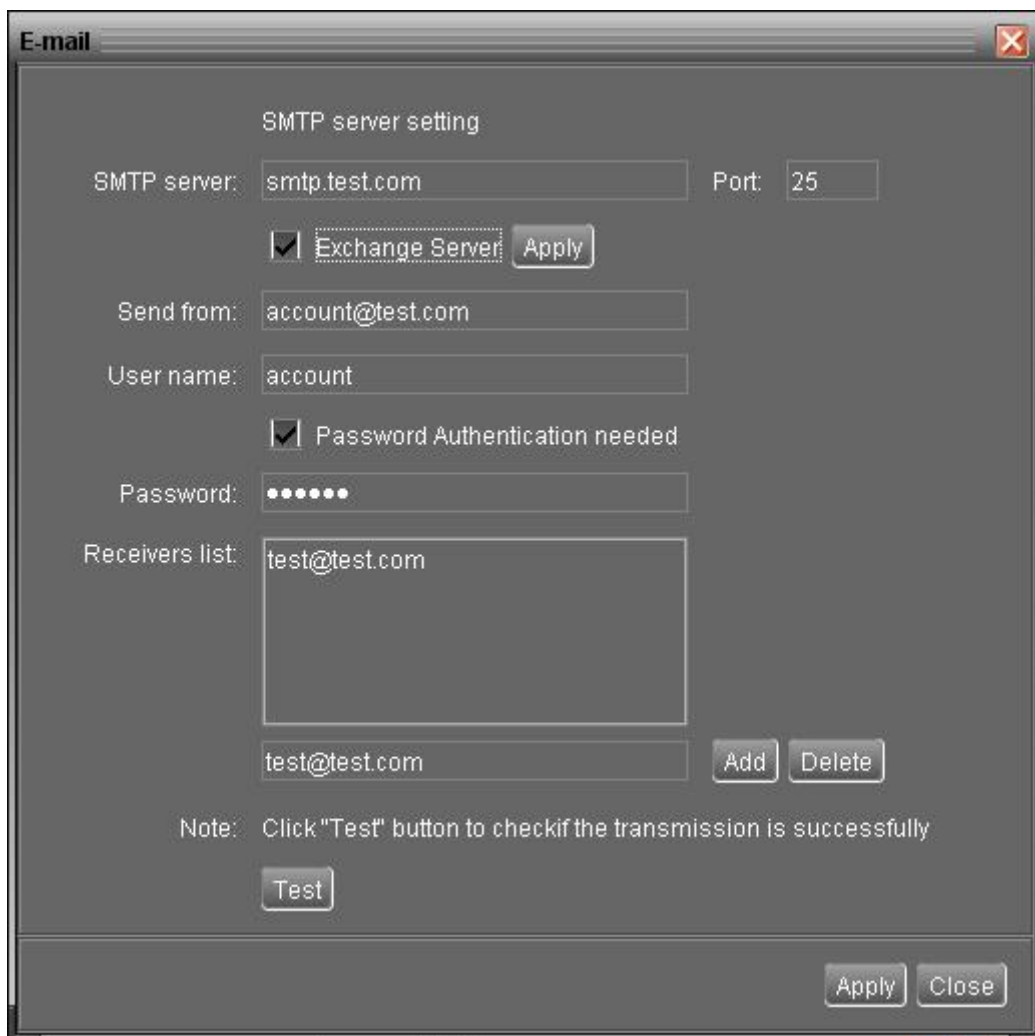
NOTE: It's required to plug in a GSM modem if sending a SMS to mobile phone.

4.1.4. E-mail

This configuration is allowed to send an alarm mail from SMTP server. For the event receiving list, please configure in "Event Action" column (refer to section 4.1.5).

To use this function, the e-mail service must be correctly configured in the computer. All values in this function page are default empty. This action can't be executed without the SMTP information, e-mail account, and password. Besides, the sender account should be allowed for SMTP/POP3 forwarding.

Step 1 Select WatchPower Configuration >> E-mail. Refer to Diagram 4-8.



The screenshot shows a window titled "E-mail" with a close button in the top right corner. The window contains the following fields and controls:

- SMTP server setting**: A label above the SMTP server and Port fields.
- SMTP server**: A text input field containing "smtp.test.com".
- Port**: A text input field containing "25".
- Exchange Server**: A checkbox that is checked, with an "Apply" button to its right.
- Send from**: A text input field containing "account@test.com".
- User name**: A text input field containing "account".
- Password Authentication needed**: A checkbox that is checked.
- Password**: A password input field with seven dots.
- Receivers list**: A list box containing "test@test.com". Below the list box is another text input field containing "test@test.com", with "Add" and "Delete" buttons to its right.
- Note**: A text label that reads "Click 'Test' button to checkif the transmission is successfully".
- Test**: A button located below the note.
- Apply** and **Close**: Buttons located at the bottom right of the window.

Diagram 4-8

Step 2 Enter SMTP server, Port, Send from E-mail address, User name and password. Click checkbox if password authentication is needed to verify password.

NOTE: If using Exchange Server for mailbox system, it's required to configure

Exchange server domain name in SMTP server. Beside, please click checkbox of "Exchange server" and click "Apply" button.

Step 3 Enter receivers' e-mail accounts in E-mail column. Then, click "Add" to add into Receivers list. To delete e-mail account, simply select accounts from Receivers list and click "Delete" button.

Step 4 Click "Apply" to save all changes. The "Test" button can be used to send a test e-mail to all receivers to confirm correct operation. When the test e-mails are successfully sent to specific recipients, it will pop up a successful message on operated personal computer. Otherwise, it will pop up a failure dialog to indicate there is an error for parameter setting.

4.1.5. Event action

It's to configure response actions for events. It provides six response actions after events occur.

1. Event record: It will record event to data log in software after events occur.

This function is default selected.

2. Warning message(s): It will send event message to tray.

3. SMS: It will send the event message to specific mobile phone numbers after events occur.

4. E-mail: It will send the event e-mail to assigned e-mail accounts after events occur.

Step 1 Select WatchPower Configuration >> Event actions. Refer to Diagram 4-9.

Step 2 Select action methods by clicking checkbox.

Step 3 Click "Apply" button to save all configurations.

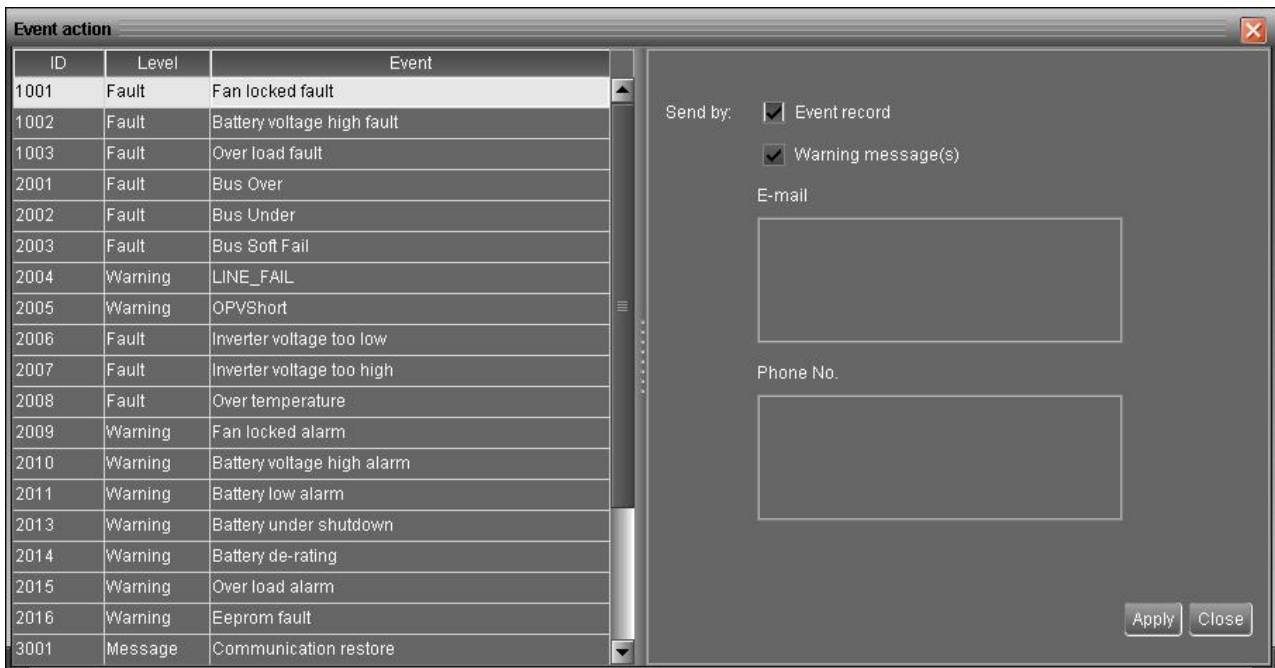


Diagram 4-9

NOTE1: When modifying receiver list in SMS or e-mail columns, it's necessary to refresh the event action page to reload the updated receiver list.

4.1.6. Com. port Plug And Play Setting

To real-time monitor inverter device, it will scan each com. port anytime. In this way, it will occupy communication ports. This function will release some communication ports which are not connected with devices. To avoid any improper operation, in-used communication ports will be displayed in disabled grey icons. Users can select "Allow scanned" to re-scan or "Forbid scanned" to release communication ports based on their requirements.

Step 1: Select WatchPower configuration>> Com. port plug and play setting. Refer to Diagram 4-10.

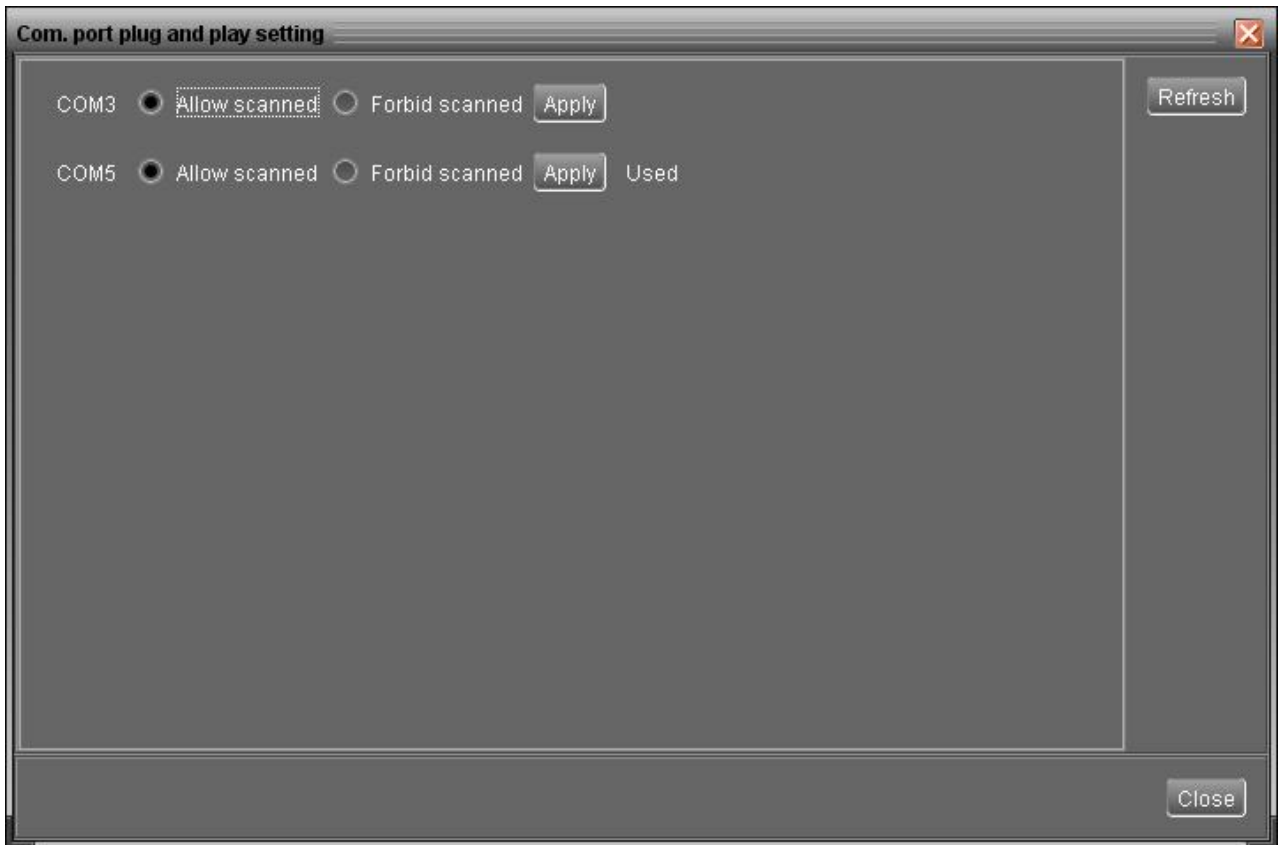



Diagram 4-10

Step 2: Click "Refresh" to reload the status of com. ports.

Step 3: Click "Forbid scanned" to stop scanning on this com. port. Click "Allow scanned" to start scanning on this com. port.

4.2. Device control

4.2.1. Parameter Setting

Select Device Control >> Parameter Setting or select shortcut icon . Refer to Diagram 4-11.

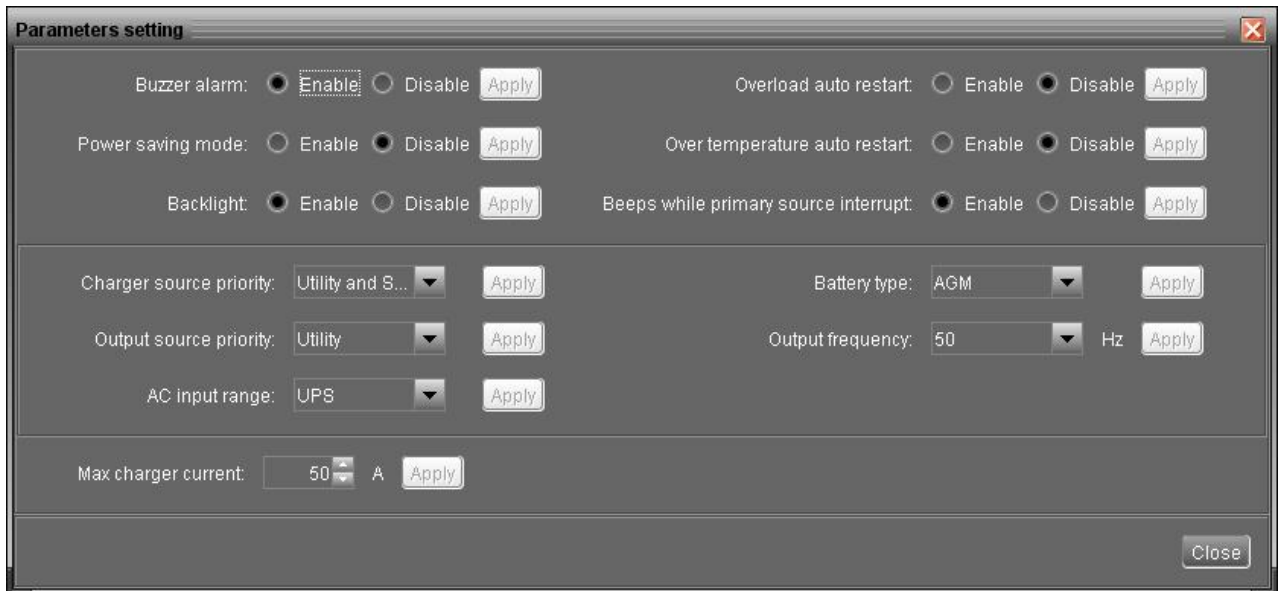


Diagram 4-11

Step 1 Configure the functions by clicking “Enable” or “Disable” button. It's also allowed to change the numbers by clicking up-down arrows or modify the numbers directly in the number column.

Step 2 Click “Apply” button to save the settings. Each function setting is saved by clicking each “Apply” button.

- Buzzer alarm: If disabled, buzzer won't be on when alarm/fault occurred. At the same time, the button tone will be disabled. Vice versa.
- Power saving mode: If disabled, output will be on continuously when device is operated in battery mode. If enable, output will be on intermittently to detect if there is load connected. If the load is detected, the inverter will provide output power. On the contrary, if the load is not detected, the output of inverter will be off until load reaches a certain level. Check product manual for more details.
- Backlight: If disabled, LCD backlight will be off when panel button is not operated for 1 minute. Vice versa.
- Overload auto restart: If disabled, the unit won't be restarted after overload occurs. Vice versa.
- Over temperature auto restart: If disabled, the unit won't be restarted after

over-temperature fault is solved. Vice versa.

- Beeps while primary source interrupt: If enabled, buzzer will alarm when primary source is abnormal. Vice versa.
- Charger source priority: Click up-down arrows to set up charger source priority. There are 3 options: utility first, solar first and solar and utility. See product manual for working diagram of these options.
- Output source priority: Click up-down arrows to set up output source priority. There are two options: utility first and solar first. See product manual for working diagram of these options.
- AC input range: Click up-down arrows to set up suitable input range for connected devices. When selecting "Appliance", it's allowed to connect home appliances. When selecting "UPS", it's allowed to connect personal computer. For the detailed input range for connected devices, please check product manual.
- Battery type: Select connected battery type. There are two options, AGM and Flooded. Please refer to product manual for charging parameter of these two battery types.
- Output frequency: Nominal output frequency, 50Hz and 60Hz selectable.
- Max. charger current: Click up-down arrow to set up maximum charging current for this device. Maximum charging current in each model may be different. Please refer to product manual for the information.

4.2.2. Restore to the defaults

This function is allowed to restore all settings back to default value and clear all data in database.

Select Device control >> Restore to the defaults. Refers to Diagram 4-12

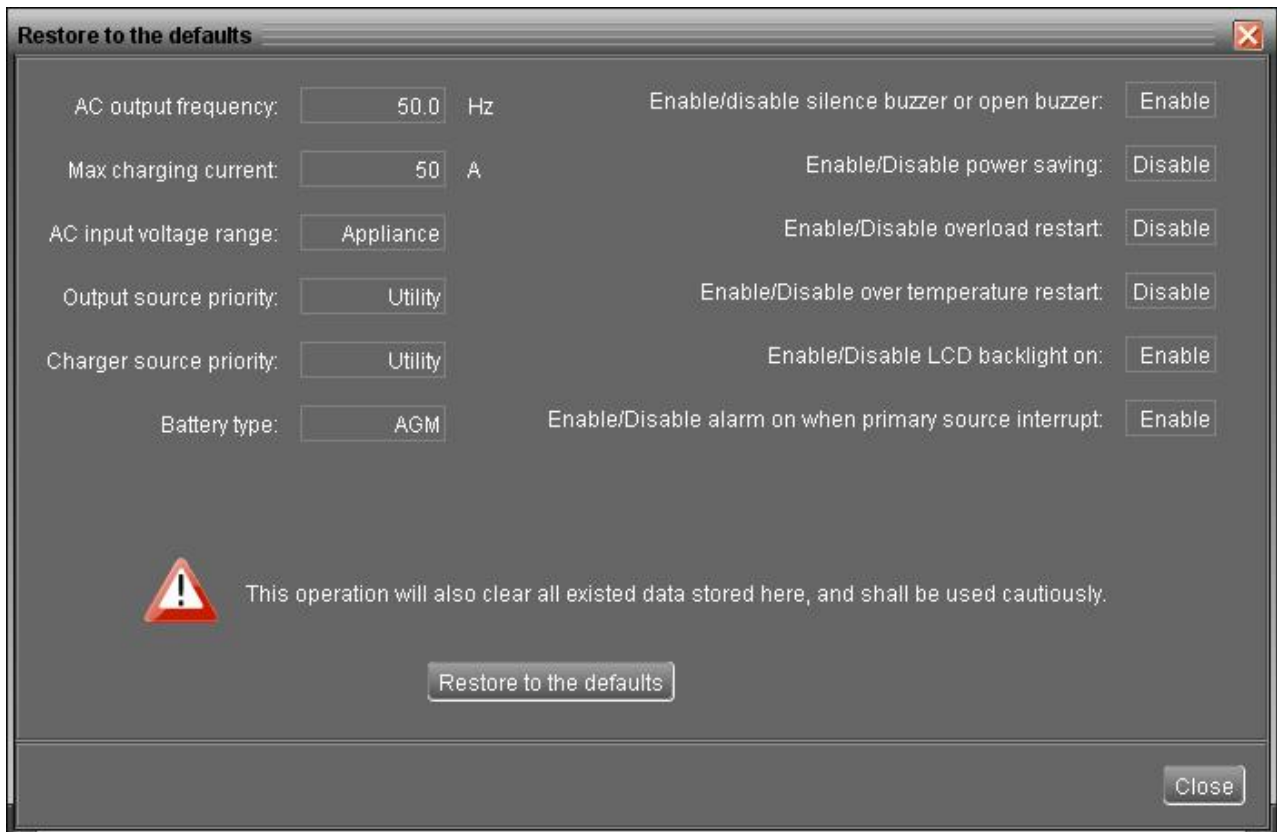


Diagram 4-12

4.3. View

4.3.1. Data

This function is to browse the working data of inverter saved in datasheets.

- Datasheets



Select View >>Data>>Datasheets or click shortcut icon. Refer to Diagram 4-17.

Select browsed device and period to display in the screen. Click "Browse" to get result.

- **"Print"**: Print the listed data table.
- **"Delete"**: Select specific data and click "Delete" button to delete the record.
- **"Delete all"**: Click "Delete All" button to delete all records in the listed table.
- **"Export"**: Click "Export" button to save listed table to local PC in .PDF file.

Data

Datasheets Charts

Device: 55355535553535 Display item: Device mode Time period: 2012-08-30 -- 2012-08-30

Device mode	Time	AC voltage	AC frequency	PV input voltage	AC output app...	AC output acti...	Battery voltage	Battery capacity	Charging curr...	Output voltage	Output frequ...
Line Mode	2012-08-30 14:17:30	230.0	50.0	12.6	8.0	11.0	12.89	95	16.0	230.0	50.0
Line Mode	2012-08-30 14:16:29	230.0	50.0	12.6	8.0	10.0	12.87	95	16.0	230.0	50.0
Line Mode	2012-08-30 14:14:29	230.0	50.0	12.6	8.0	10.0	12.89	95	16.0	230.0	50.0
Line Mode	2012-08-30 14:07:30	230.0	50.0	19.7	323.0	325.0	12.8	95	16.0	230.0	50.0
Line Mode	2012-08-30 14:06:29	230.0	50.0	19.7	324.0	324.0	12.84	95	16.0	230.0	50.0

Total: 6 row(s)

Diagram 4-17

- **Charts**

Select View >>Data>>Charts. Refer to Diagram 4-18.

Select browsed device and period. Then, click "Browse" to get the result.

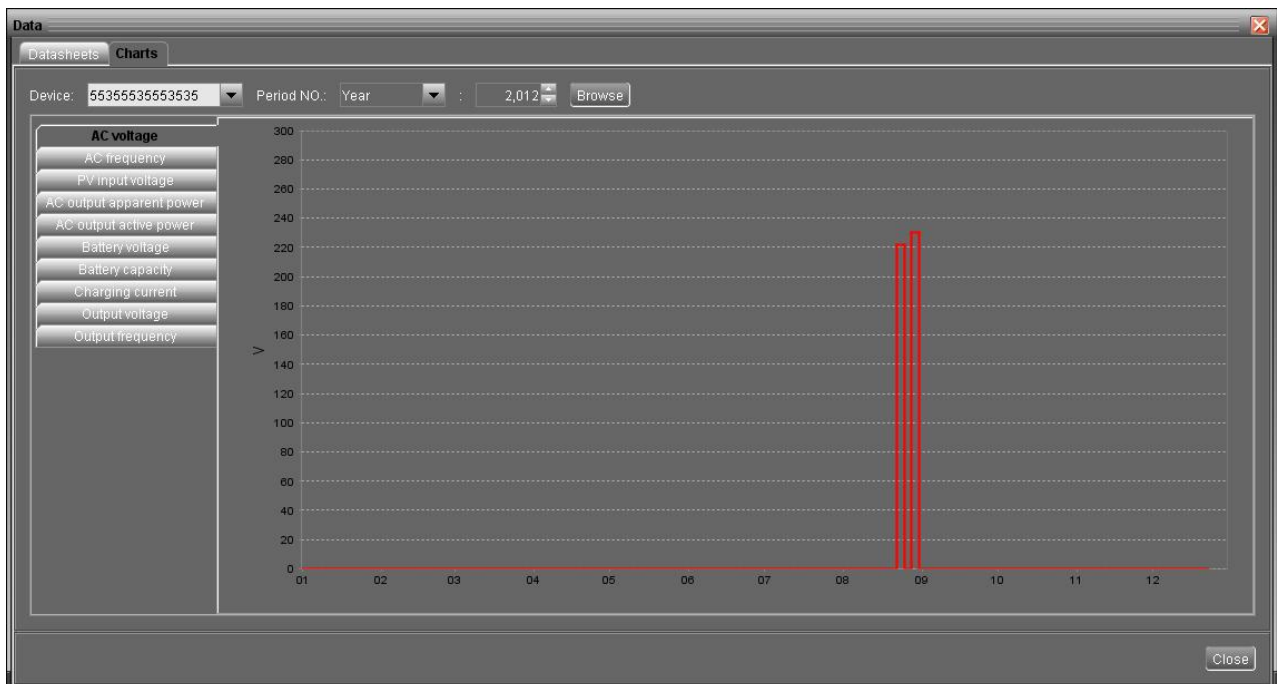


Diagram 4-18

4.3.2. Event log



Select View >>Event log or click shortcut icon to enter event log.

It's to browse history events according to time duration selected. It lists all detailed information and statistics for history events. Refer to Diagram 4-20.

- **"Delete"**: Select specific data and click "Delete" button to delete the record.
- **"Delete all"**: Click "Delete All" button to delete all records in the listed table.
- **"Export"**: Click "Export" button to save listed table to local PC in .PDF file.

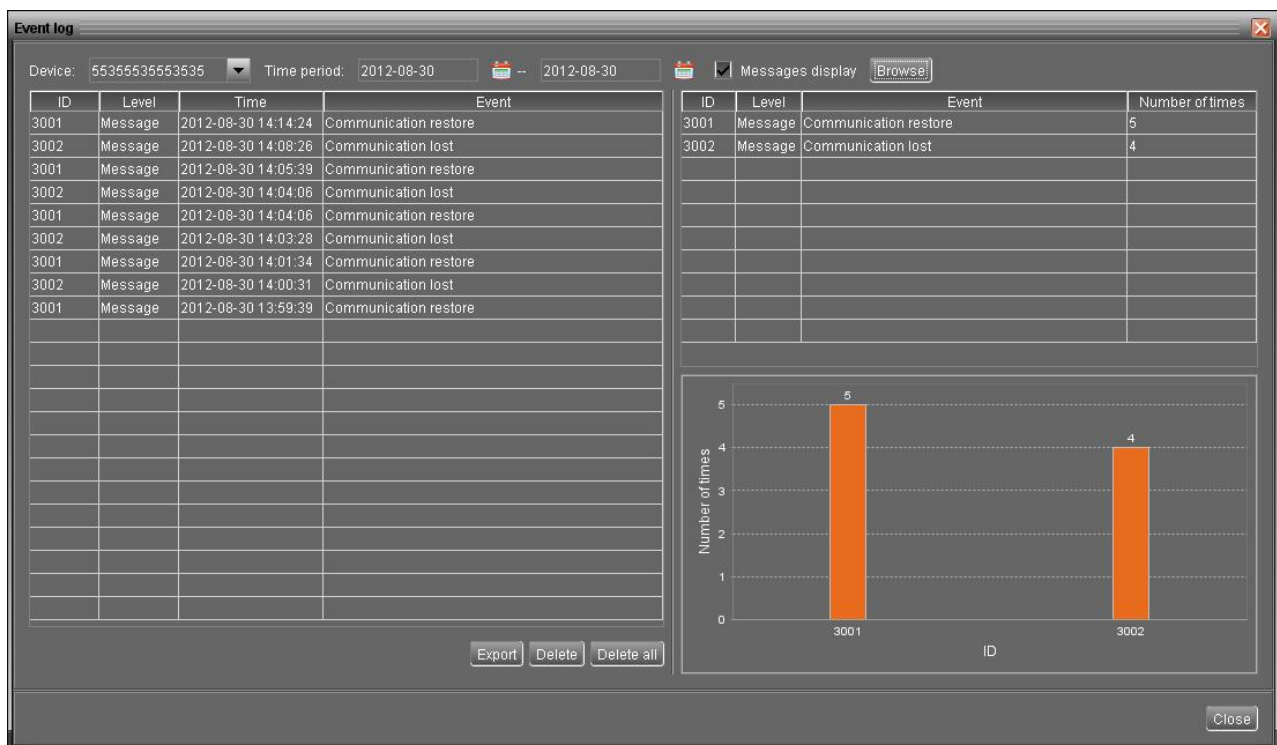


Diagram 4-20

4.4. Log in and Log out



This short cut icon is to display the login status. When icon is displayed, it means user status is guest. When icon is displayed, it means user logs in as administrator.



Click icon and enter password to login the software. The default password is "administrator". Refer to Diagram 4-22.

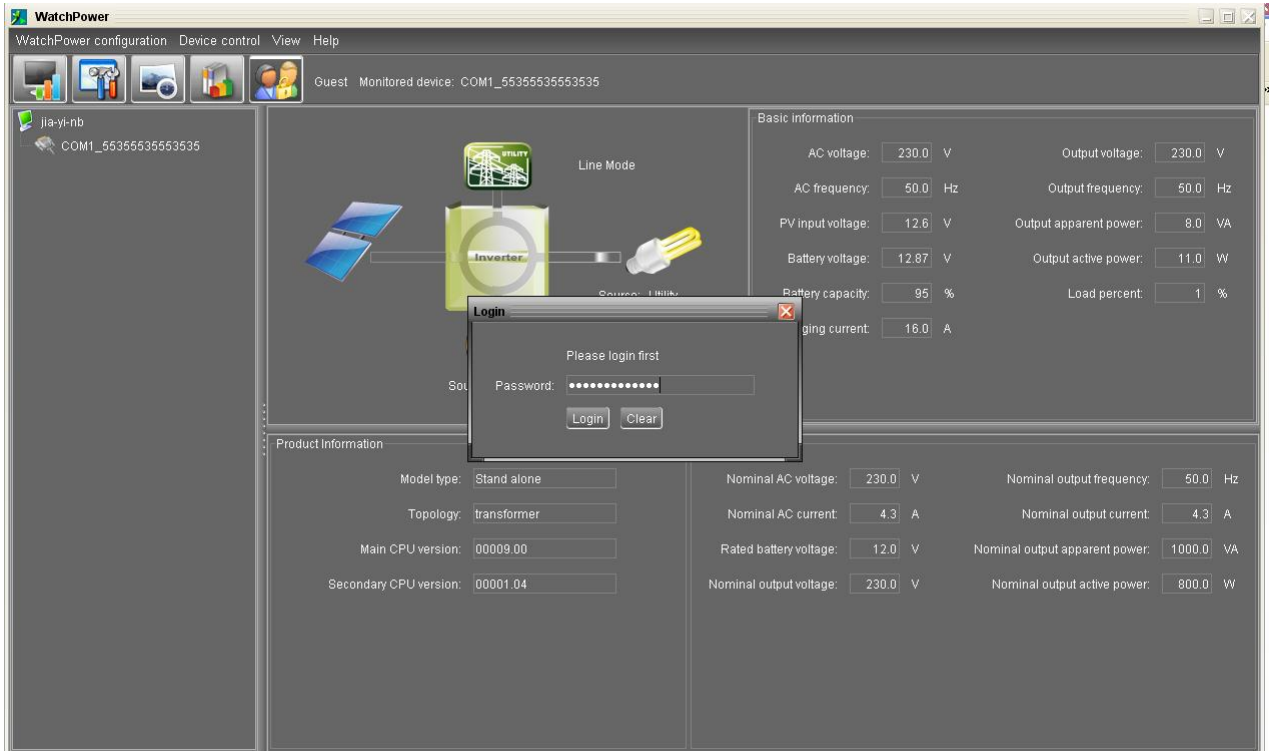



Diagram 4-22

Click icon  to log out. Then, the status will become to "guest". Refer to Diagram 4-23.

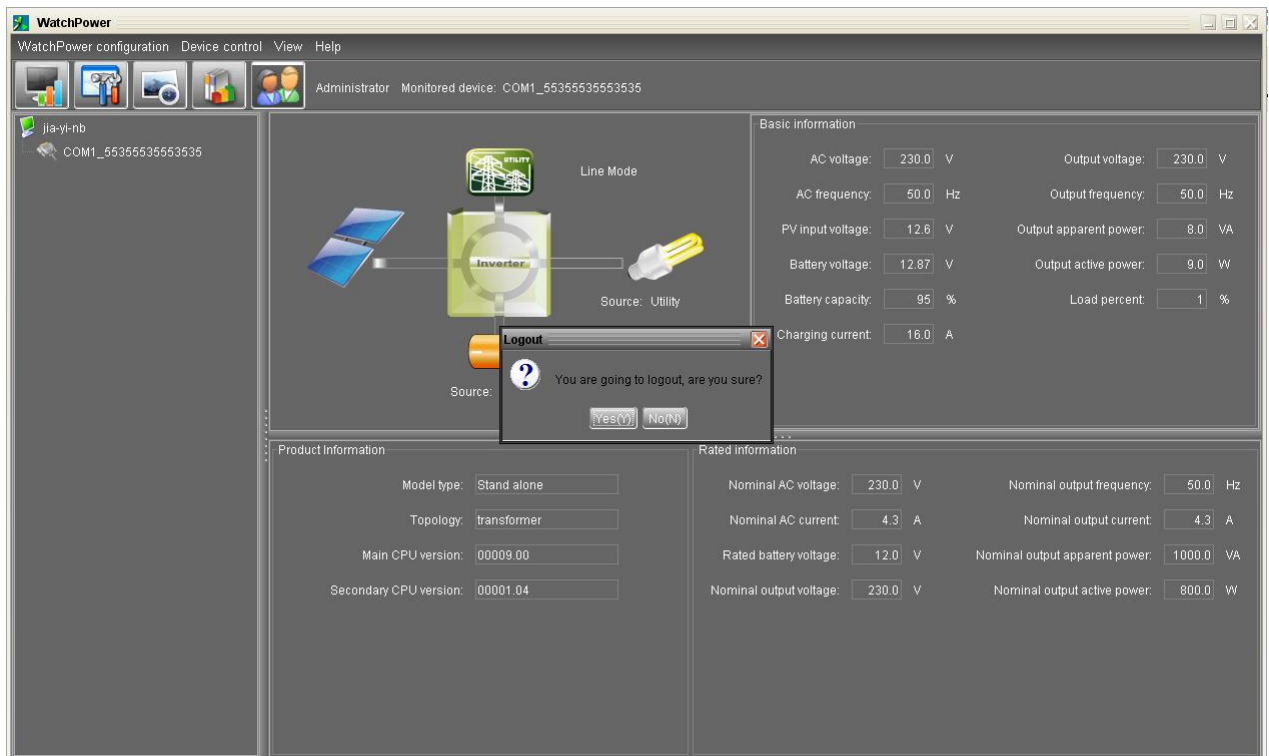


Diagram 4-23

4.5. Help

- **About:** Click "Help" menu and select "About" item. It represents the copyright information about software
- **Help:** Click "Help" menu and select "Online help" item. It will open the help manual. Before operating software, please read manual carefully.